



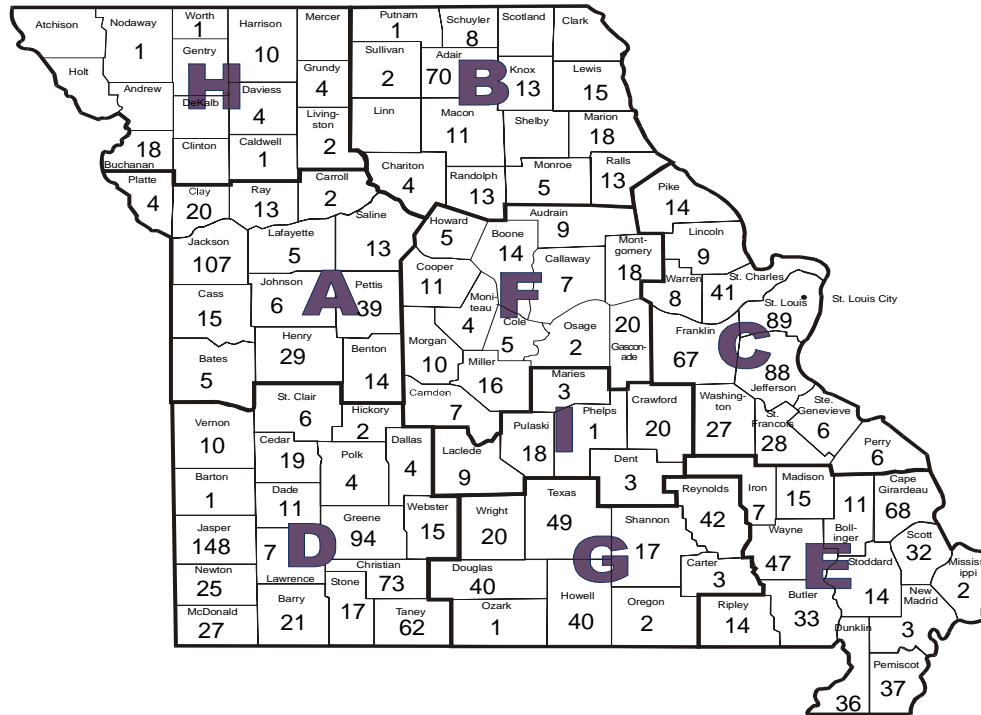
Missouri's Meth Numbers

And

Legislative Response

MISSOURI STATEWIDE TOTALS

2001 Lab Incidents Entered Into EPIC



2130

Note: These totals reflect the number of lab incidents that have been submitted to DDCC for entry into EPIC

Revised: April 8, 2002

Lab incidents include operational and non-operational lab seizures, chemical/equipment/glassware seizures, and dumpsites

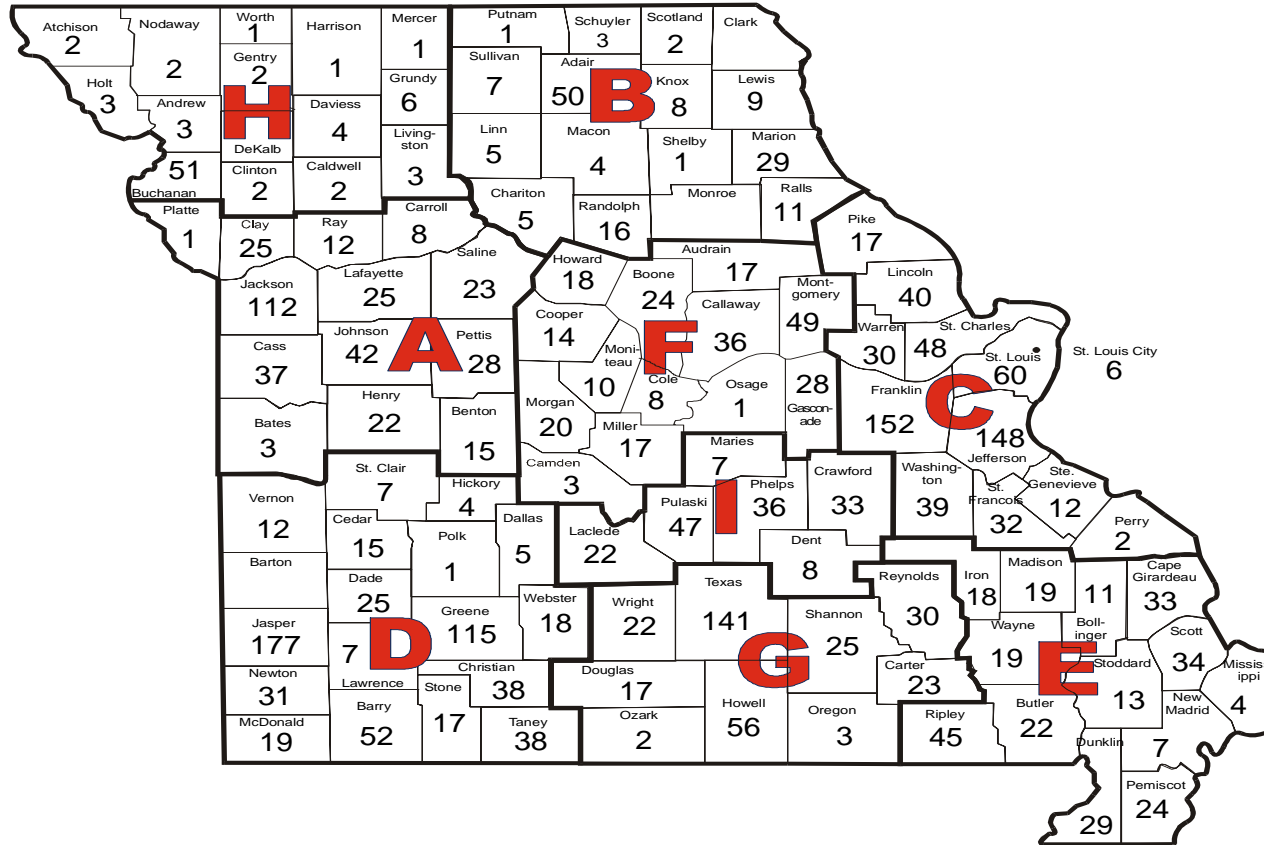
2001 Meth Legislation

- Effective August 28, 2001
- Limited single ingredient Pseudoephedrine products to 3 pack, 9 gram purchase limit

MISSOURI STATEWIDE TOTALS

Methamphetamine Lab Incidents

2002



2,743

Note: These totals reflect the number of meth lab incidents that have been submitted to DDCC for entry into EPIC

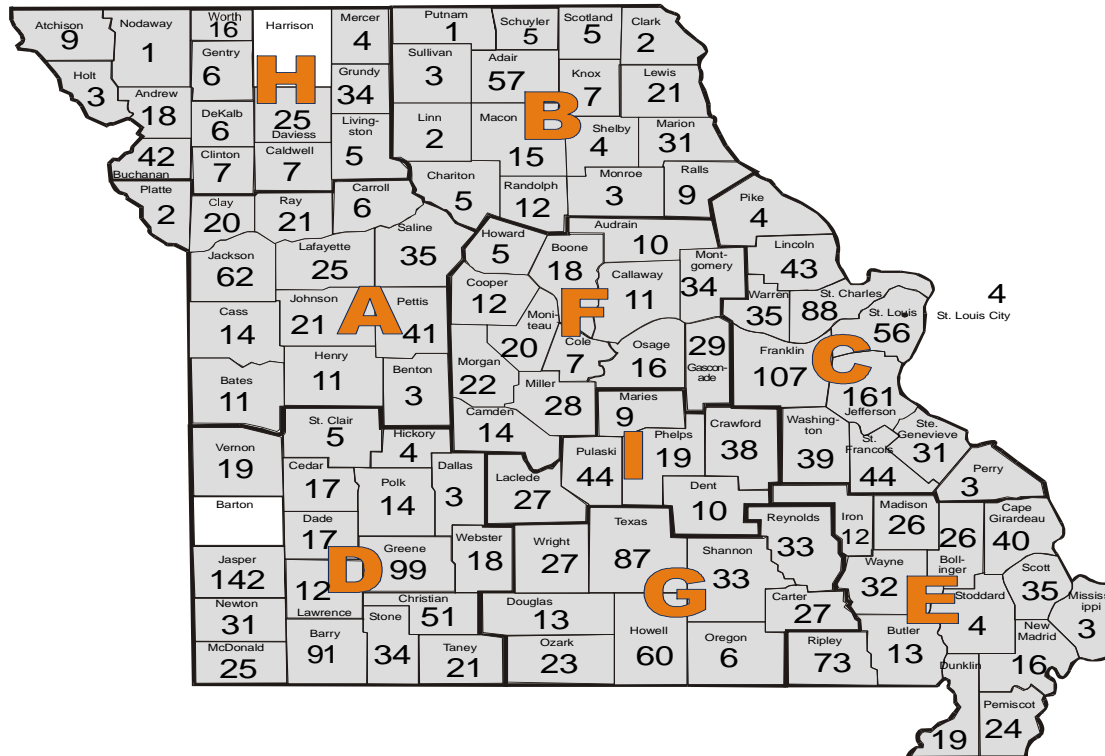
Revised: March 24, 2003

Lab incidents include operational and non-operational lab seizures, chemical/equipment/glassware seizures, and dumpsites

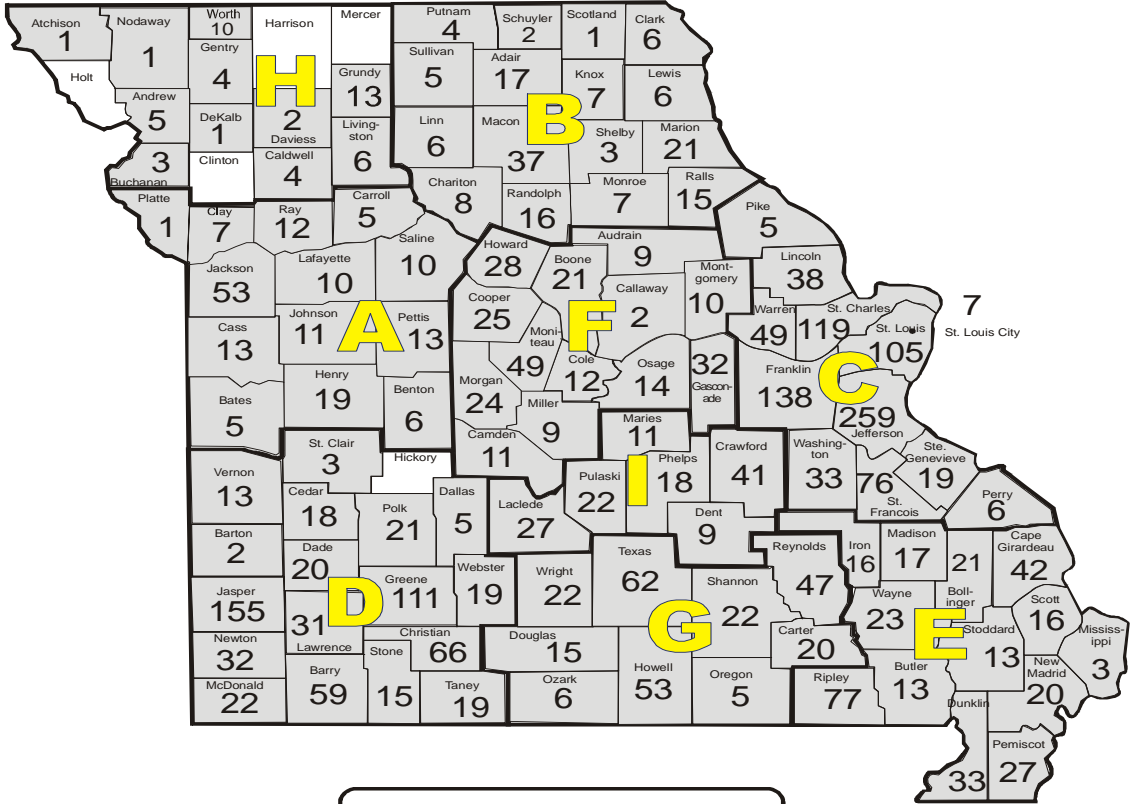
More Meth Legislation Passed

- Effective August 28, 2003
- Reduced purchase limit to 2 packs and 6 grams for single ingredient products. 3 packs and 9 gram limit on multi-ingredient.
- All single ingredient products must be behind the sales counter or within 10 feet and visual view of the sales counter

Missouri Statewide Methamphetamine Laboratory Incident Totals 2003



Missouri Statewide Methamphetamine Laboratory Incident Totals 2004



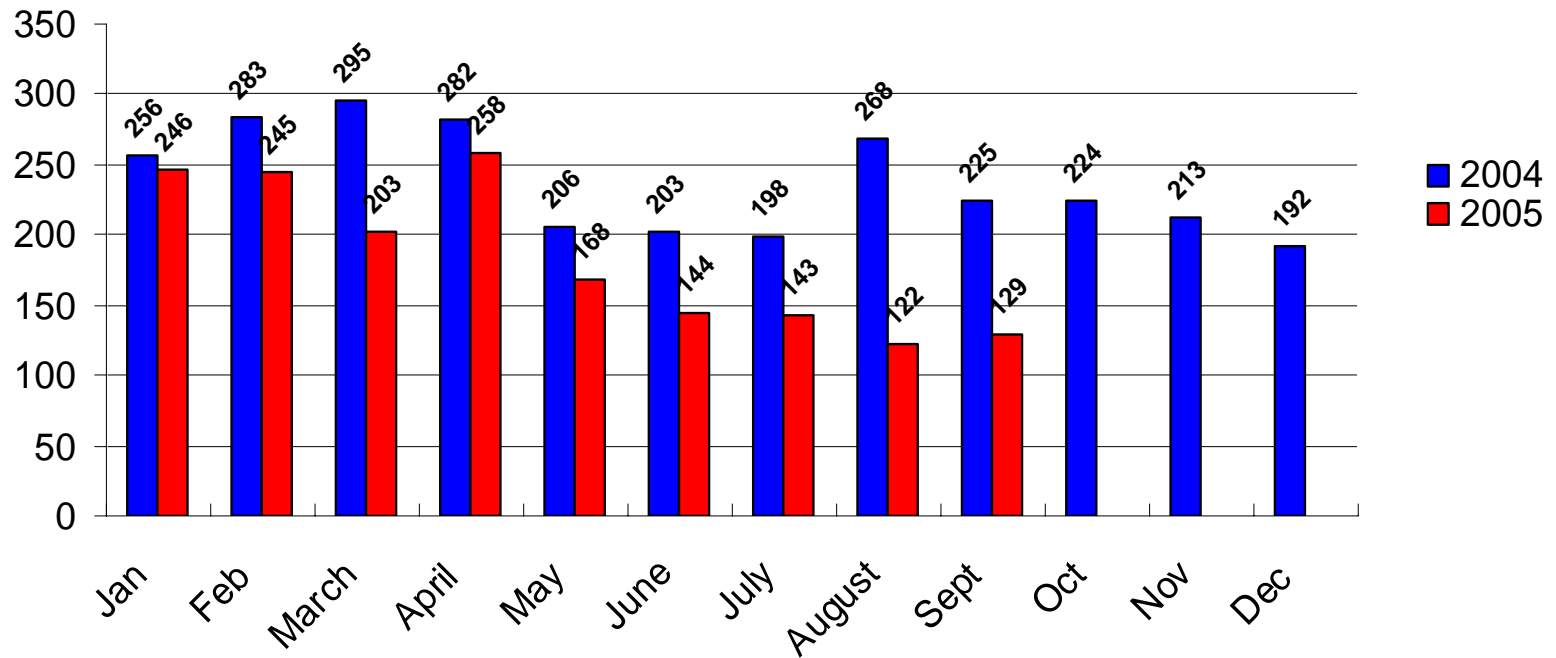
2,788

*Includes Laboratories, Chemical/Equipment/Glassware seizures and Dumpsites that have been received by the MSHP for entry into the CLSS as of 2-24-05.

Updated: February 24, 2005

Governor's Meth Legislation for Pseudoephedrine (PSE) Products Passed and Signed into Law on June 15, 2005

- Makes PSE single/multi-ingredient products a schedule V drug. (does not include liquids or liquid gel-caps)
- Dispensed by a Pharmacist or Tech.
- Show Photo ID
- Sign Written Log
- Limited to 9 grams of purchase/month



*SB 10/HB-441-Pseudoephedrine Control-Signed into law 06-15-05, effective 07-14-05

* Incidents include Chem/Glass Ware, Dumpsites, & Operational Meth Labs

Missouri Statewide Methamphetamine Laboratory Incident Totals 2005

